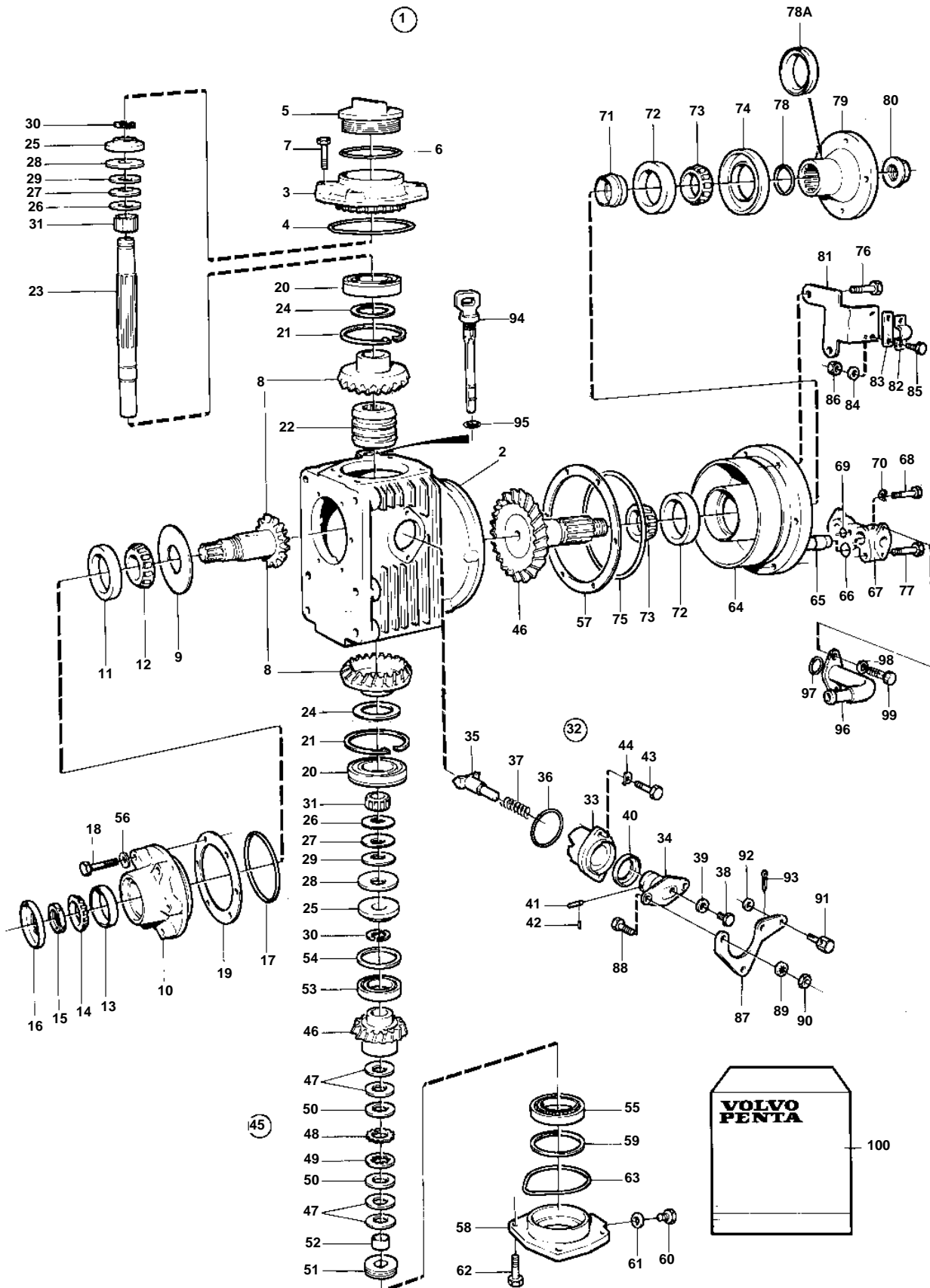


MS2A-D, MS2L-D



16133

## MS2A-D, MS2L-D

REF	PART NO.	QTY	DESCRIPTION	SEE SEC.	NOTES
1		1	Reversing gear		REPLACED BY 873079
	873079	1	Reversing gear		
2	873092	1	• Gear housing		
3	873123	1	• Cover		
4	949962	1	• O-ring		
5	851754	1	• Oil filler cap		
6	1664473	1	• O-ring		Included in gasket kit.
7	946671	1	• Flange screw		
8	873095	1	• Gear set		
9	851621	1	• Guide disc		
10	872710	1	• Bearing box		
11	181302	1	• Cup		
12	181301	1	• Inner ring		
13	183750	1	• Cup		
14	183752	1	• Inner ring		
15	852485	1	• Lock nut		
16	873094	1	• Sealing ring		
17	925093	1	• O-ring		
18	940101	6	• Screw		
19	851622	X	• Shim		TH = 0,10mm
	851623	X	• Shim		TH = 0.15mm
	851624	X	• Shim		TH=0.35mm
20	851756	2	• Bearing		
21	852190	2	• Lock ring		
22	873098	1	• Sliding sleeve		
23	873099	1	• Shaft		
24	941835	X	• Shim		D = 71mm, TH = 0,05mm
	852184	X	• Shim		D=43mm, TH=0,05mm
	84219	X	• Shim		TH = 0,10mm
	949776	X	• Shim		TH = 0.15mm
	84218	X	• Spacer		TH=0.35mm
25	852079	2	• Lock washer		
26	852311	2	• Washer		
27	852317	2	• Washer		
28	852213	2	• Disc spring		
29	852080	6	• Disc spring		
30	851629	4	• Lock ring half		
31	851757	2	• Needle bearing		
32	851661	1	• Shift mechanism		
33	851662	1	• • Bearing housing		
34	897816	1	• • Eccentric piston		
			• • Bulletin P-44-1-7	P-44-1-7-EN	Shift mechanism, eccentric piston
35	851664	1	• • Dog		
36	925065	1	• • O-ring		Included in gasket kit.
37	814184	1	• • Spring		
38	897711	1	• • Screw		
39	897871	X	• • Shim		TH=0,20mm
40	873291	1	• • Sealing ring		Included in gasket kit.
41	942871	1	• • Pin		
42	951924	1	• • Tensioning din		
43	955296	2	• Screw		
44	941907	2	• Spring washer		
45	854284	1	• Gear set		
46		2	• • Gear		
47		4	• • Spring		
48		18	• • Disc		
49		17	• • Disc		

## MS2A-D, MS2L-D

REF	PART NO.	QTY	DESCRIPTION	SEE SEC.	NOTES
50		2	• • Thrust washer		
51		1	• • Adjuster screw		
52	852482	1	• • Bushing	NS	
53	183518	1	• Bearing		
54	851705	X	• Shim		TH = 0,10mm
	851706	X	• Shim		TH = 0.15mm
	851707	X	• Shim		TH=0.35mm
55	183842	1	• Roller bearing		
56	941906	6	• Spring washer		
57	851702	X	• Shim		TH = 0,10mm
	851703	X	• Shim		TH = 0.15mm
	851704	X	• Shim		TH=0.35mm
58	873129	1	• Bearing cover		
59	87655	X	• Shim		TH = 0,10mm
	191840	X	• Shim		TH = 0.15mm
	87654	X	• Spacer		TH=0.35mm
60	960629	1	• Plug		
61	947084	1	• Gasket		Included in gasket kit.
62	946671	4	• Flange screw		
63	925256	1	• O-ring		Included in gasket kit.
64	873130	1	• Bearing housing		
65	853940	1	• Oil cooler		
66	943309	2	• O-ring		Included in gasket kit.
67	873212	1	• Pipe connection		
68	955279	1	• Screw		
69	949750	1	• O-ring		Included in gasket kit.
70	941906	1	• Spring washer		
71	851974	1	• Collet		
72	181302	2	• Cup		
73	181301	2	• Inner ring		
74	873100	1	• Sealing ring		Included in gasket kit.
75	925262	1	• O-ring		Included in gasket kit.
76	946470	2	• Flange screw		L=35mm
	947760	2	• Flange screw		L=40mm
77	965180	2	• Flange screw		L=60mm
78	925062	1	• O-ring		Included in gasket kit.
78A	944138	1	• Sealing ring		Included in gasket kit.
79	852076	1	• Companion flange		
80	947855	1	• Lock nut		
81	852168	1	• Bracket		
82	819067	1	• Brace		
83	819068	1	• Washer		
84	940090	2	• Washer		
85	955246	2	• Screw		
86	946577	2	• Lock nut		
87	852363	1	• Lever		
88	955270	2	• Screw		
89	955948	2	• Lock washer		
90	955781	2	• Nut		
91	833462	1	• Cube		
92	955892	1	• Washer		
93	17276	1	• Cotter pin		
94	873087	1	• Oil dipstick		
95	925055	1	• O-ring		
96	873150	2	• Coolant pipe		
97	842913	2	• Sealing ring		
98	941906	4	• Spring washer		
99	955270	4	• Screw		
100	875704	1	Gasket kit		